



2035 Sustainable Mobility Plan

Public Workshop

April-May 2010



Hinesville Area Metropolitan Planning Organization

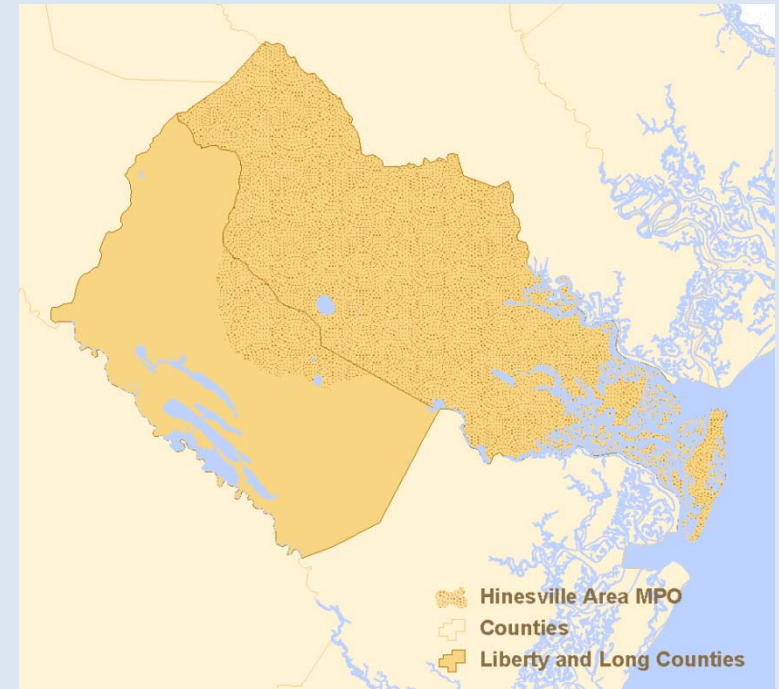
RS&H Team

Agenda

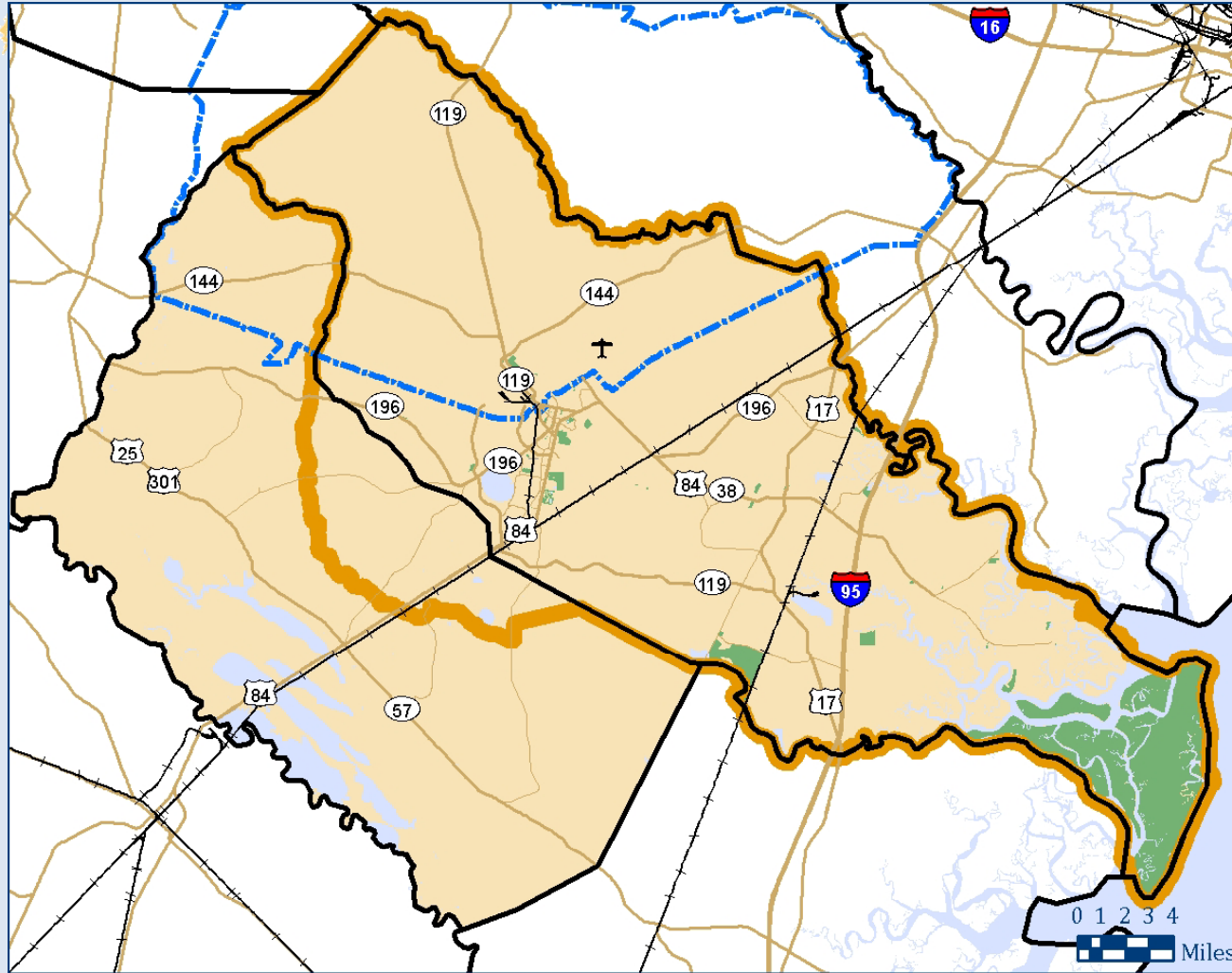
- Plan overview
- Transportation funding in area
- Your input
- Contact Information

Scope of Plan

- Required five-year update of Long Range Transportation Plan (LRTP)
 - 2035 horizon year
 - Hinesville Area MPO study area
 - Multimodal - movement of people and goods
 - Meets federal requirements
 - SAFETEA-LU transportation legislation
 - Title VI of the Civil Rights Act
- Required annual update of near term plan, TIP, for 2011-2014



2035 Sustainable Mobility Plan



- Railroad
- ✈ Liberty County Airport
- Collector
- Arterial
- Interstate
- 🏰 Fort Stewart
- 📍 Hinesville Area MPO
- 🌊 Ocean, lakes, rivers, streams
- 🌳 Parks and Recreation Sites
- 🗺 Liberty and Long Counties
- 🗺 County Boundary

2035 Sustainable Mobility Plan



Draft as of
04/08/09



Source: US Census Bureau, Hinesville GIS Office, GDOT, RS&H



Goals of the Plan

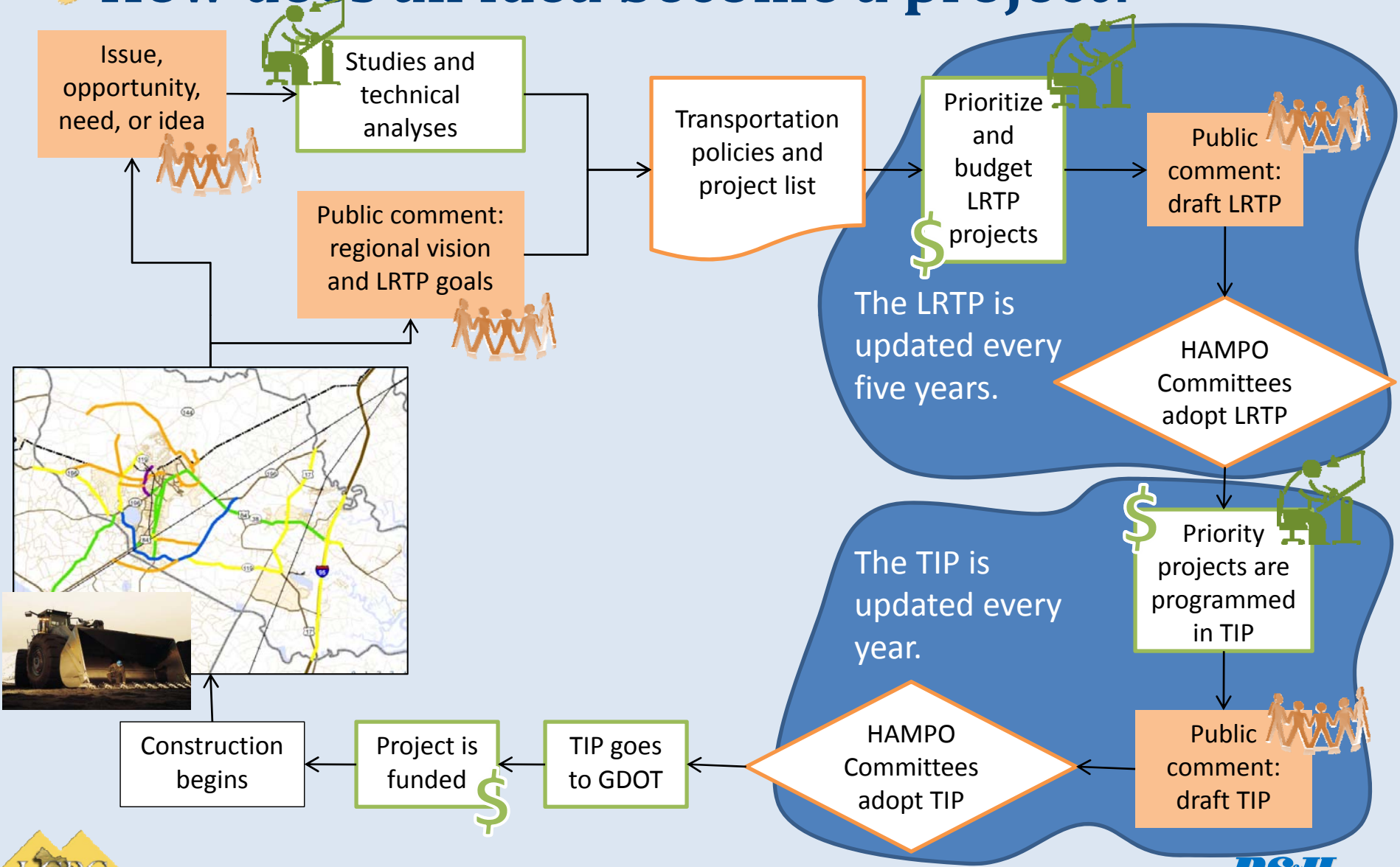
- Economic vitality
- Safety
- Security
- Accessibility and mobility
- Environmental protection, energy conservation
- Quality of life
- Consistency between transportation and planned growth
- Connectivity
- Efficiency
- Preservation
- Improve public information



Schedule - Target Dates

- Public meetings August 2009
 - Defined issues and needs, goals of plan
- Public meetings April 2010
- Draft plan complete July 2010
- Public meetings to review draft plan July 2010
- Final plan adoption August 2010
- Plan due October 19, 2010

How does an idea become a project?

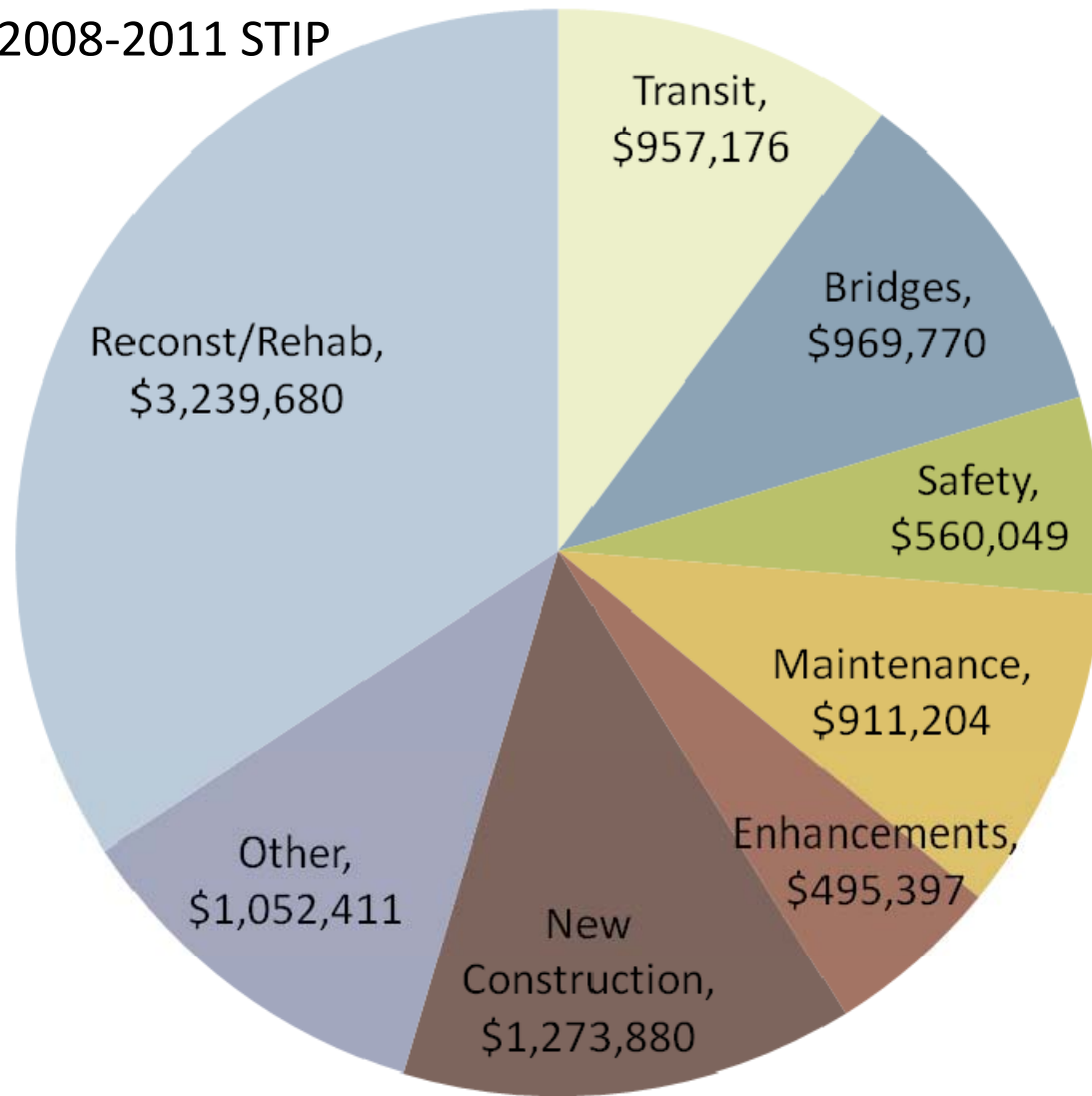


Transportation Funding Sources

- Funds from local sources
 - SPLOST
 - Property tax
 - Grants
 - In-kind contributions
- Funds from state and federal sources
 - Programs target specific modes, goals, or needs
 - Each has eligible project types and requirements

Planned Expenditures by Category in Georgia

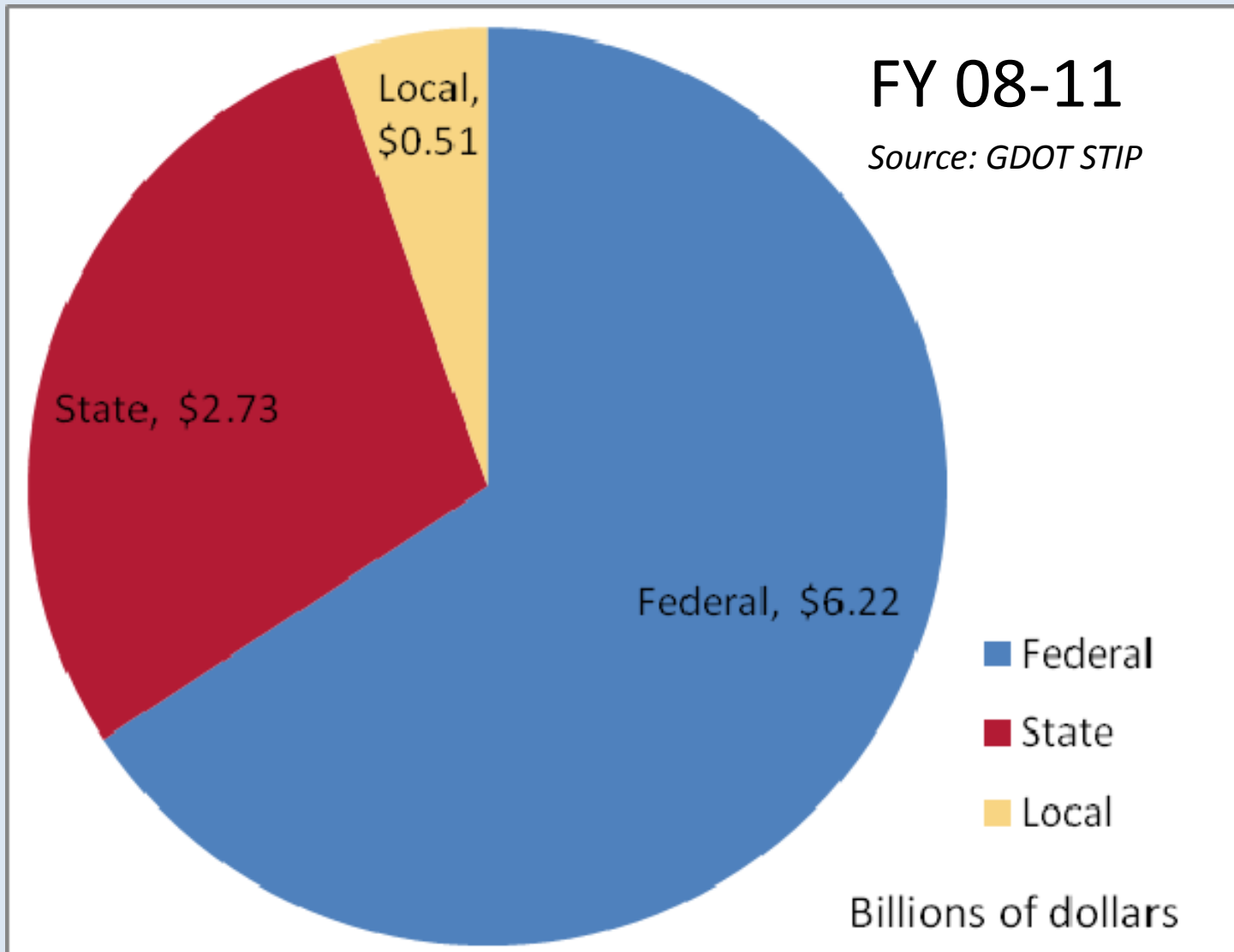
2008-2011 STIP



\$ in Thousands,
Total Funds \$9.46 Billion
Source: GDOT



Funding Sources in Georgia



Funding in HAMPO 2010-2013 TIP

- Programmed road projects

\$ 7,977,031 Federal

\$ 1,994,258 State

\$ 4,000,000 Local

\$ 13,971,289 Total

- Programmed capital transit projects

\$ 1,332,401 Federal

\$ 9,556 State

\$ 9,556 Local

\$ 1,351,513 Total

2010 2011 2012 2013 2014



TIP adopted Nov 12, 2009

Hinesville Area Metropolitan Planning Organization



Funding in draft HAMPO 2011-2014 TIP

- Draft road projects in TIP

\$ 21,869,828 Federal

\$ 5,467,457 State

\$ 4,000,000 Local*

\$ 31,337,285 Total

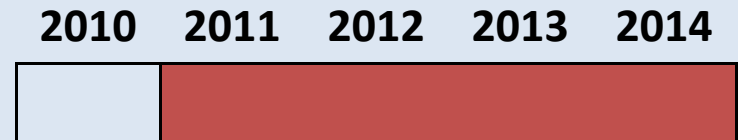
- Draft capital transit projects

\$ 639,100 Federal

\$ 24,400 State

\$ 24,400 Local

\$ 687,900 Total



Road estimates from GDOT Planning; transit estimates include HAMPO estimates for 2014.



Long Range Funding

- Federal and State Funds for roadway improvements
- 2005-2030 LRTP *adopted in 2005*
 - \$8.59 Million annually
 - \$221 Million over 26 years
 - Plus local funds
- 2010-2035 LRTP estimates
 - \$5.79 M to \$7.90 M annually
 - \$150 Million to \$205 Million
 - Plus local funds
- 7% to 32% reduction in projected roadway funds since 2005 plan was adopted
- *All amounts in 2008 dollars*

Long Range Funding

- Federal and State Funds for roadway improvements
- 2005-2030 LRTP *adopted in 2005*
 - \$8.59 Million annually
 - \$221 Million over 26 years
 - Plus local funds
- 2010-2035 LRTP estimates
 - \$5.79 M to \$7.90 M annually
 - \$150 Million to \$205 Million
 - Plus local funds
- **7% to 32% reduction in projected roadway funds since 2005 plan was adopted**
- *All amounts in 2008 dollars*

We need your input

- Corridor classification
- Sector study areas
- 2035 scenarios
- Future transportation investments

Please sign in!



2035 Sustainable Mobility Plan

Contact Information

Thank you.

Rachel Hatcher, LCPC Transportation and Land Use Planner

Sonny Timmerman, LCPC Executive Director

912-408-2030

Whitney Shephard, RS&H

912-236-5311

www.thelcpc.org



Hinesville Area Metropolitan Planning Organization

RS&H Team